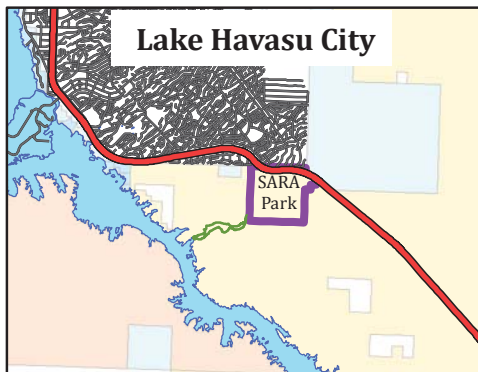
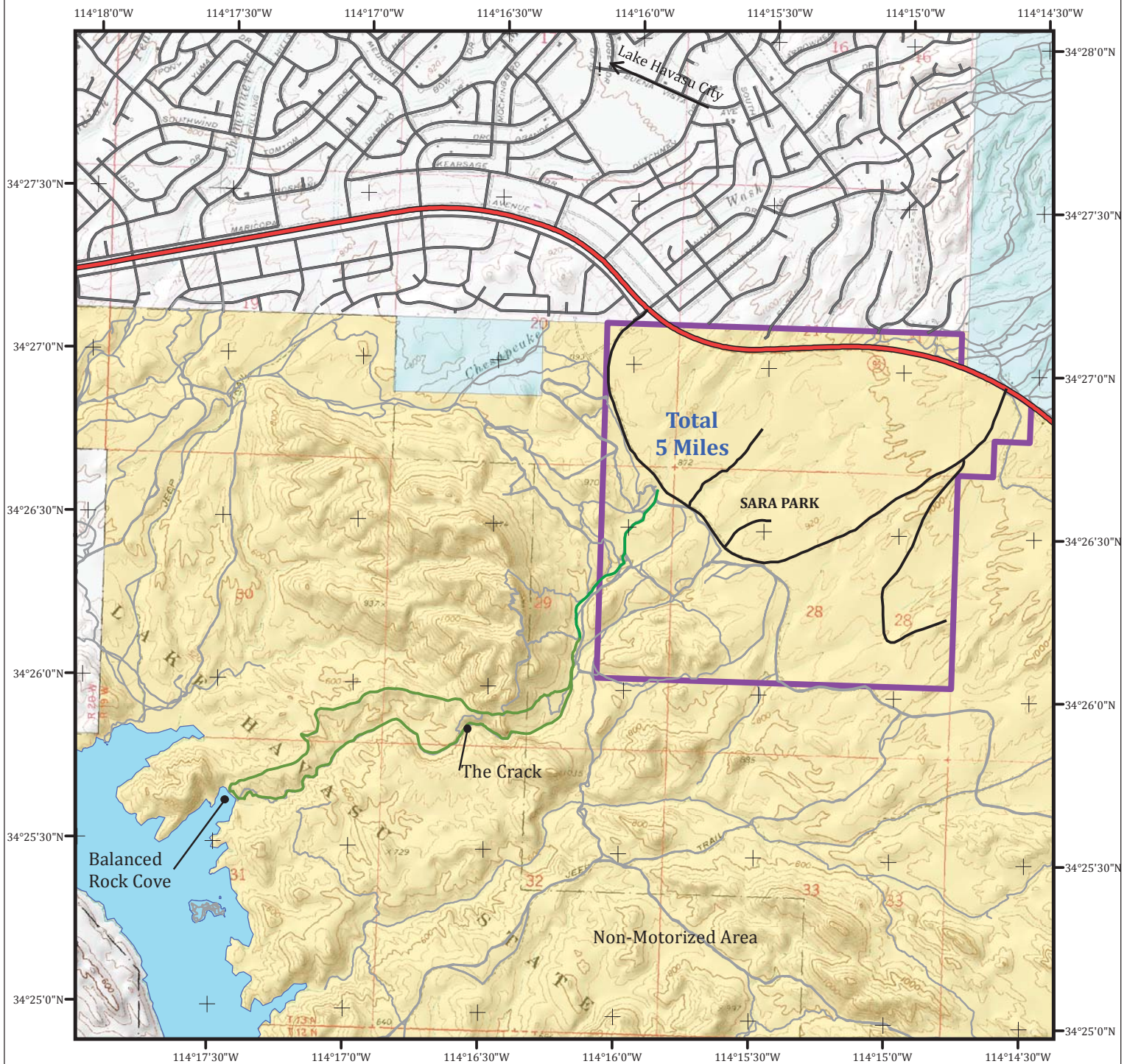


# Crack in the Mountain Trail



## Legend

- Crack in the Mountain Trail
- Non-Motorized Trails
- Bureau of Land Management
- Private
- State



United States Department of the Interior  
Bureau of Land Management  
Lake Havasu Field Office  
2610 Sweetwater Ave  
Lake Havasu City, AZ 86406  
928-505-1200



0 0.1250.25 0.5 Miles

1:30,631

Map for illustrative purposes only.  
Not intended for navigation purposes.  
All data subject to change and must be verified  
by appropriate public records.

# CRACK IN THE MOUNTAIN TRAIL

UPDATED 2013  
BY  
STEVE ESKENAZI

